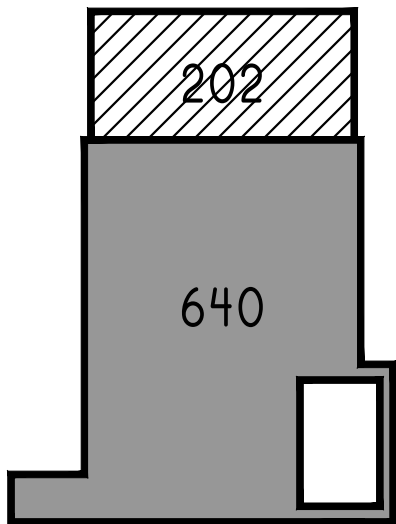
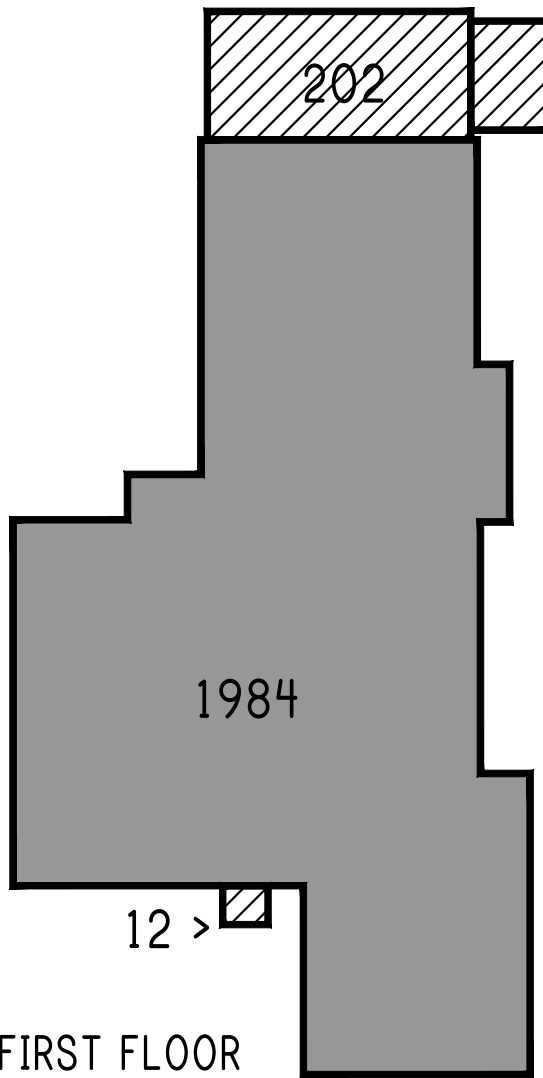


<177>

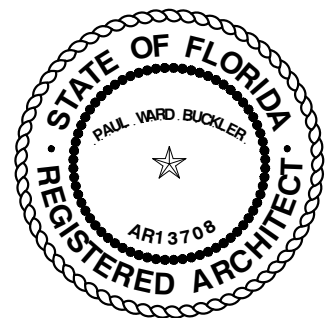


SECOND FLOOR



FIRST FLOOR

<51



3880 IRVINGTON AVE		ACTUAL (SF)	ADJUST (SF)
■	CONDITIONED SPACE @100%	2624	2624
▨	UNCONDITIONED SPACE @ 50%	0	0
▨	COVERED SPACE/EXT @ 33%	467	156
	TOTAL	3091	2780

PAUL W. BUCKLER AR13708
 (786) 200-0606
 1701 COUNTRY CLUB PRADO
 CORAL GABLES, FLORIDA 33134
 31 DE 2023